



Welcome to launch2net Premium

launch2net Premium is a 3G Internet connection manager which allows a one-click Internet access with many mobile devices in most mobile networks around the world.

The demoversion of launch2net Premium allows you to spent a total of 150 minutes online. The connection quits after every 30 minutes online time.

Your nova media team

Preparations

For convenient use of the software, please be sure to regard the following conditions:

- launch2net Premium supports many different mobile devices. Make sure you are using a supported device. An up-to-date list of all supported device manufacturers can be found at <http://www.novamedia.de/launch2net>
- launch2net Premium supports many mobile network operators worldwide. Make sure you are using a supported network. An up-to-date list of all supported network operators can be found at <http://www.novamedia.de/launch2net>
- Use an adequate subscription plan. Some mobile network providers do not allow the usage of a mobile device by default. If in doubt, please ask your mobile network provider.

Connect to the Internet

Connect the mobile device to your Macintosh computer and start launch2net Premium. The software will detect your 3G modem and your network operator. As soon as the detection process has finished, the Connect button will turn orange. Click **Connect** to establish a mobile Internet connection.



launch2net Premium may ask you for the PIN code of the SIM card you are using.

In some cases it will be necessary to manually select the network operator, launch2net Premium will display a list of networks to choose from.

Disconnect from the Internet

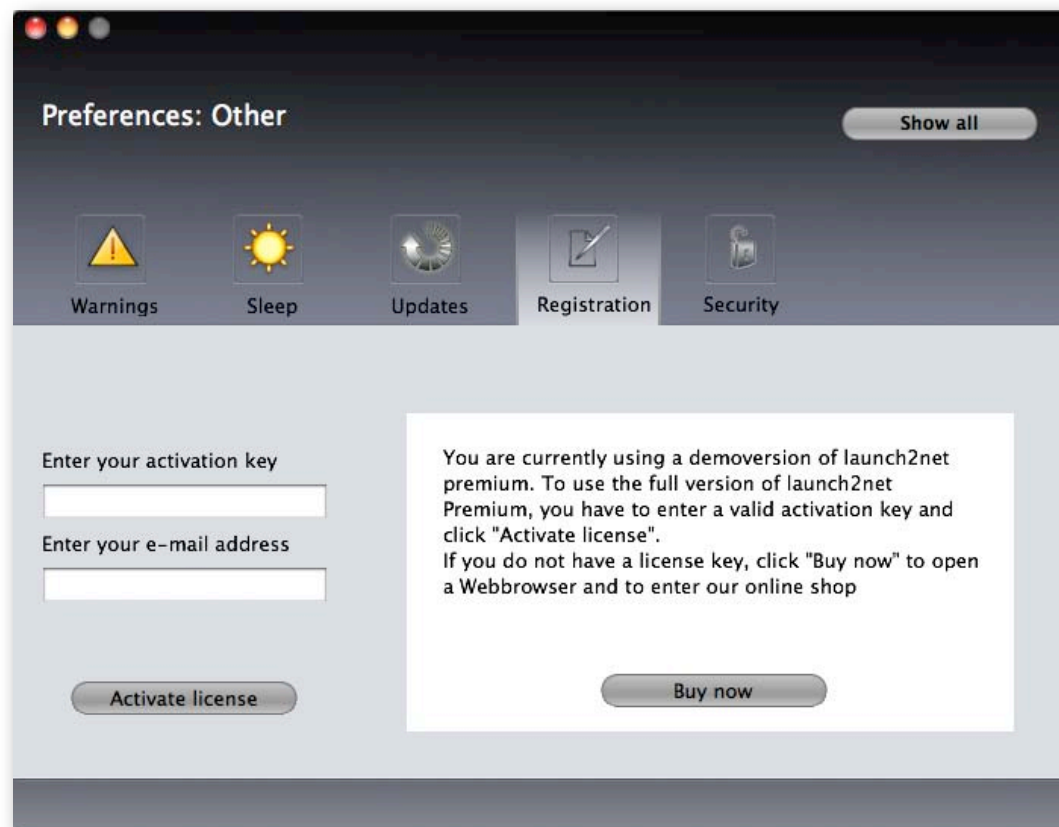
As soon as you are connected to the Internet, the main window will display the online time and the data throughput. Click **Disconnect** to quit the mobile Internet connection.



When disconnected, launch2net Premium will display the total online time and data throughput of the current period.

Activate launch2net Premium

To use the full version of launch2net Premium, you have to activate the software. This will allow unrestricted access to the functionality of launch2net Premium.



How to activate launch2net Premium:

- Click launch2net > Preferences... to open the Preferences window.
- Click ,Activation' to open the activation window.
- Enter the activation key, e-mail address and click ,Activate license'.
- Accept the license terms.

launch2net Premium is now activated.

Transfer your activation of launch2net Premium

To save your investment in launch2net Premium you can transfer your activation from your old Macintosh computer to a new Macintosh:

- Install launch2net Premium on the new Macintosh computer and click [launch2net > Preferences](#) in the menu bar.
- Click the [Activation icon](#) to open the activation dialog.
- Enter your activation key and your e-mail address and click **Activate license**. You will see a notice that this activation key is already in use.
- Click **OK** to activate launch2net Premium on the new computer. Click **Cancel** to keep the activation active on the old computer.

If you want to use two or more Macintosh computers with launch2net Premium at the same time, you can buy additional licenses from our website:

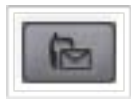
<http://www.novamedia.de/launch2net>

Additional Services



launch2net Premium offers convenient access to additional features in the footer bar of the main window.

Click the appropriate button to use one of these services:



Opens the [SMS text message window](#) to send, receive and manage SMS text messages



Opens the [statistics window](#) to see details about all connections and data/time usage



Opens the [Mobile Hub window](#) to offer Internetsharing for other computer and devices



Opens the [PrePaid Information](#) to see which PrePaid service is available for data connections



Opens the [GPS Information](#) to see GPS location data

SMS text message manager

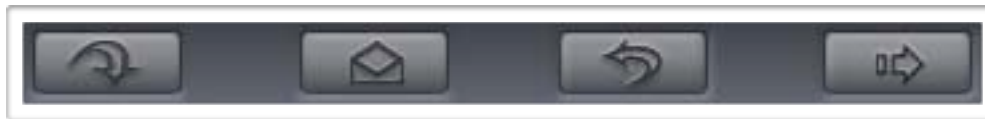
launch2net Premium features a sophisticated SMS text message manager, which is linked to the address book of Mac OS X. The SMS text message manager supports Multipart messages as well as Multigroup messages for up to 10 recipients, depending on the mobile device.



Click the SMS icon in the footer of launch2net Premium to open the SMS manager.

Messages are not stored local, as the SMS text message manager interacts with the mobile device directly.

Using the SMS text message manager



launch2net Premium offers convenient access to text message functions in the icon bar.

Click the appropriate button to use one of these functions:



Click to [receive messages](#)



Click to [create a new message](#)

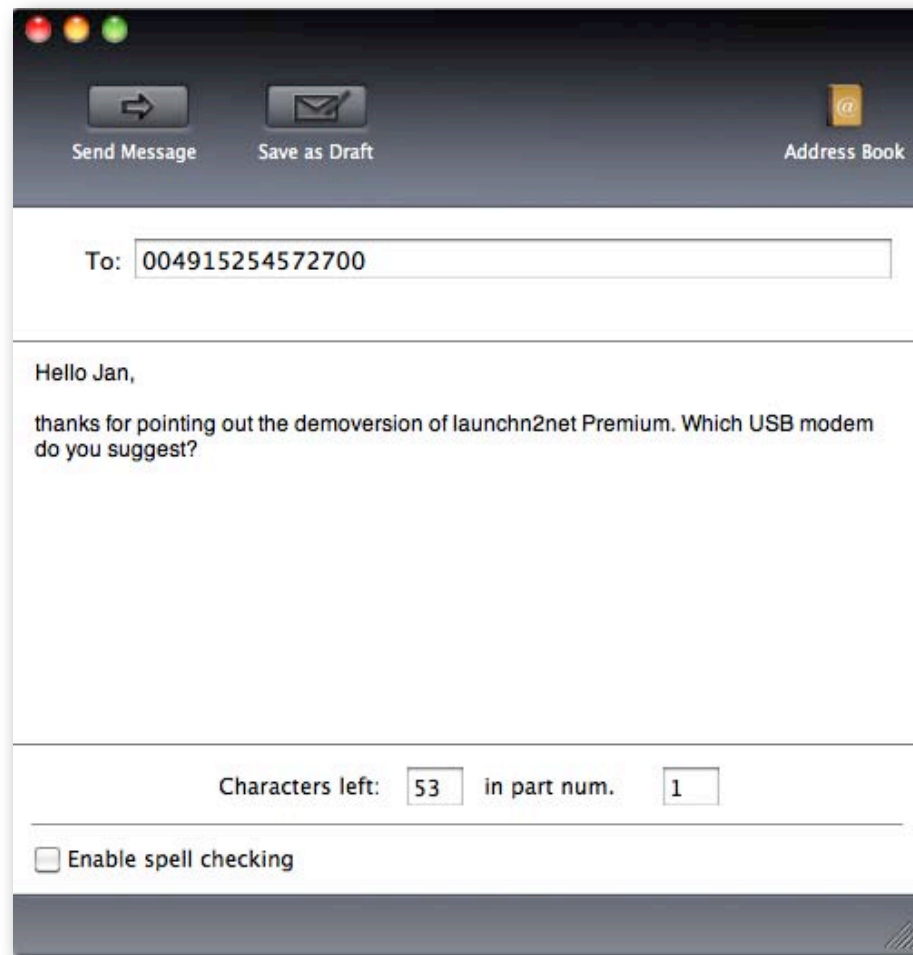


Click to [reply to a message](#)



Click to [forward a message](#)

Create a new text message

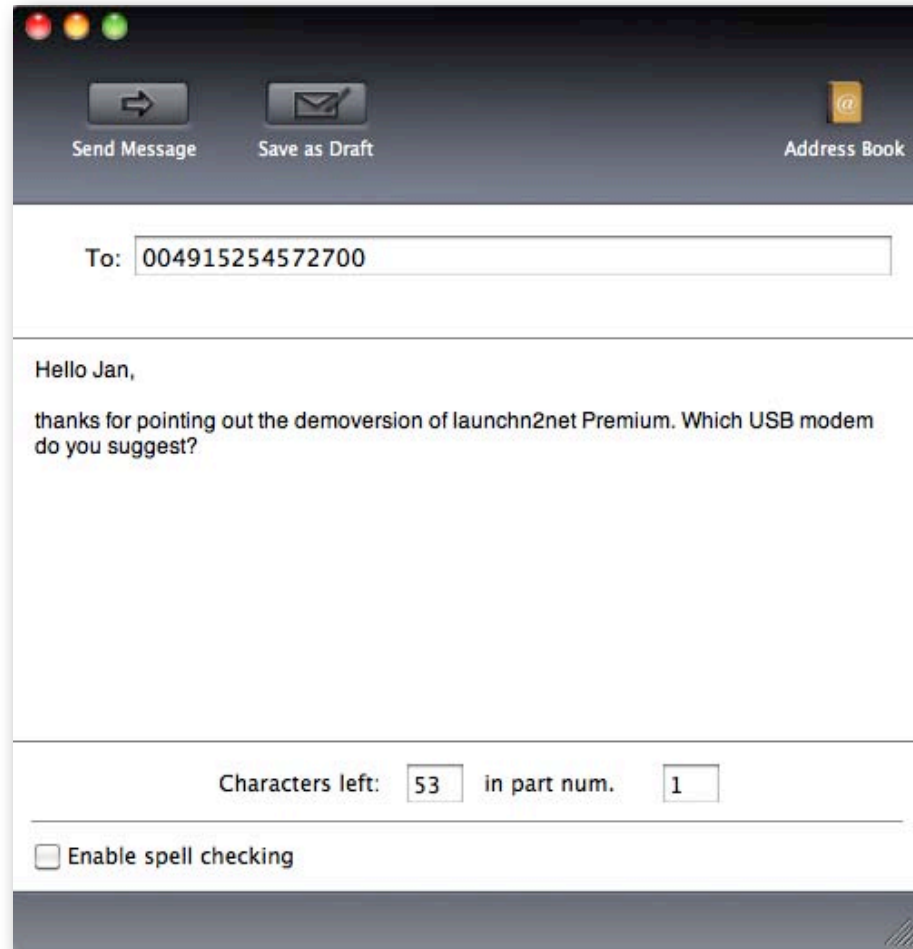


Click **New Message** in the SMS text message manager window to open a new message window.

Enter up to 10 recipients in the ,To:' field:

The SMS manager is closely connected to the Address Book of Mac OS X. Enter the first characters of the first or last name to display all suitable contacts to choose from. You can also drag and drop contacts from address book into the ,To:' field.

Otherwise, enter the desired cell phone numbers, separated by a comma.



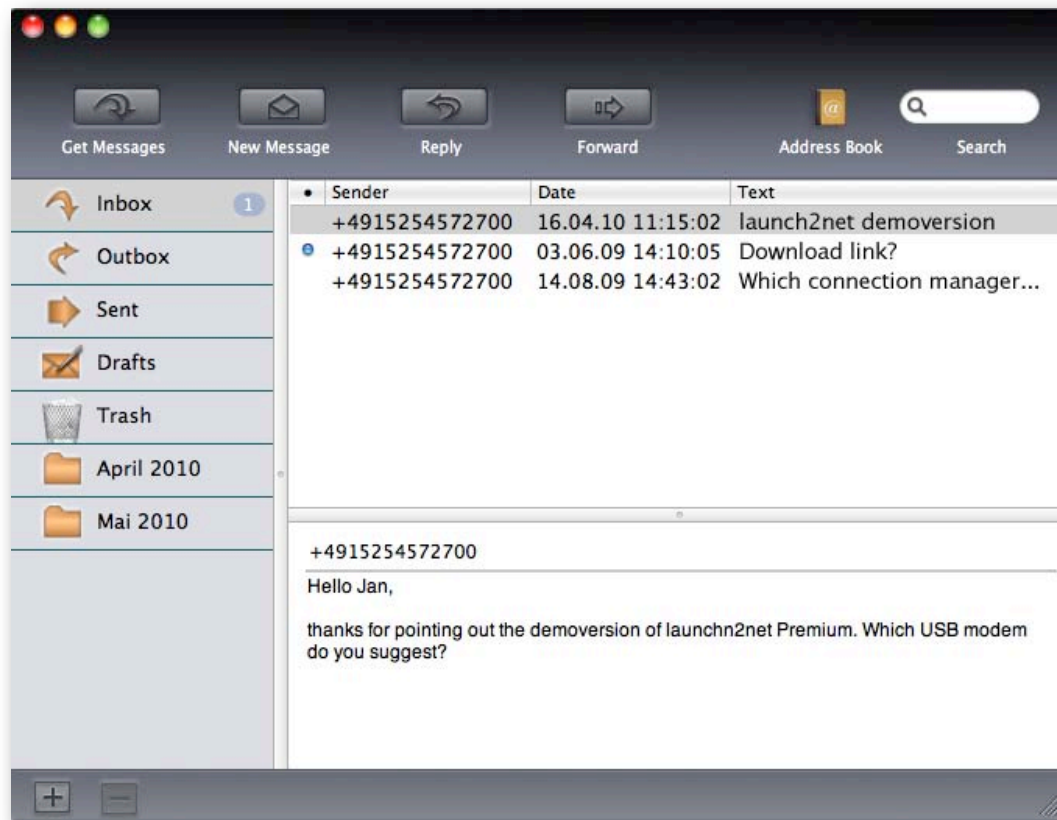
Enter the desired text into the main area of the text message window. A message can contain 160 characters. Longer texts will automatically be send in several messages, up to a maximum of 10 messages.

Click ‚Activate spell checker‘ if you want to use the built-in spell checker of Mac OS X.

Click ‚Send Message‘ to send the message immediately or ‚Save as Draft‘ to save the message in the ‚Drafts‘ folder for later use.

Hint: If no cellular service is available, the message will be saved in the Outbox and be sent when a service is available again.

Receive text messages



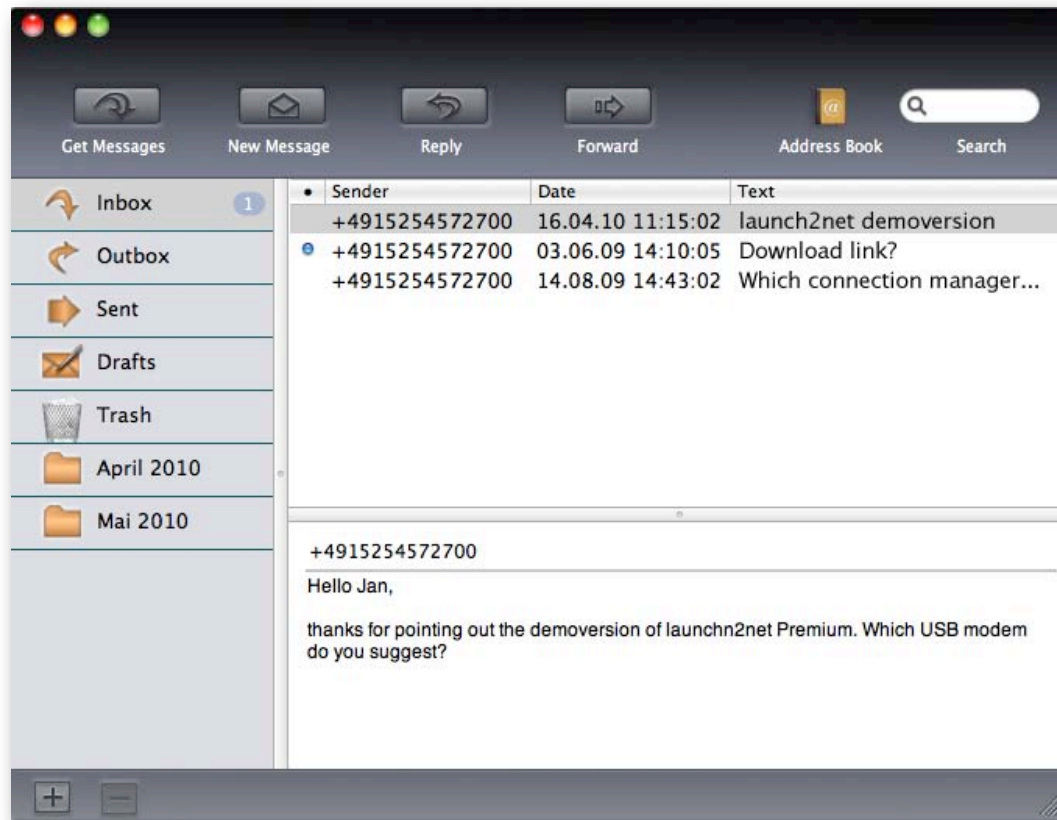
Click **Get messages** in the icon bar to receive messages.

Click on a message to have its contents displayed at the bottom pane.

Unread messages are indicated by a blue icon next to the message.

Right-click on a message to open the context menu to toggle the read/unread status, to delete a message and see additional options.

Manage text messages



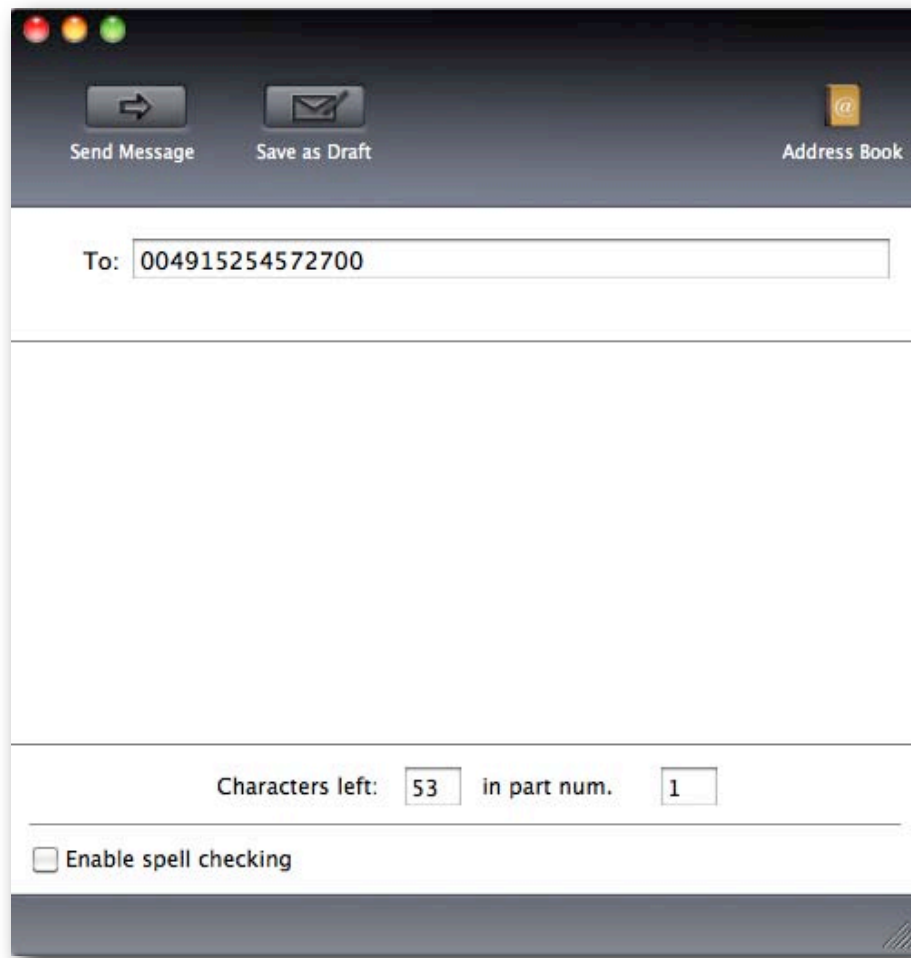
Text messages can be dragged and dropped to any folder in the folder pane.

To create a new folder, click + . Double click on a folder title to change the name of any custom folder.

To delete a folder, select it and click - . To delete a message, drag it to the trash bin.

Select **launch2net Premium** -> **Empty trash bin** to delete them on the device as well.

Reply to a text message



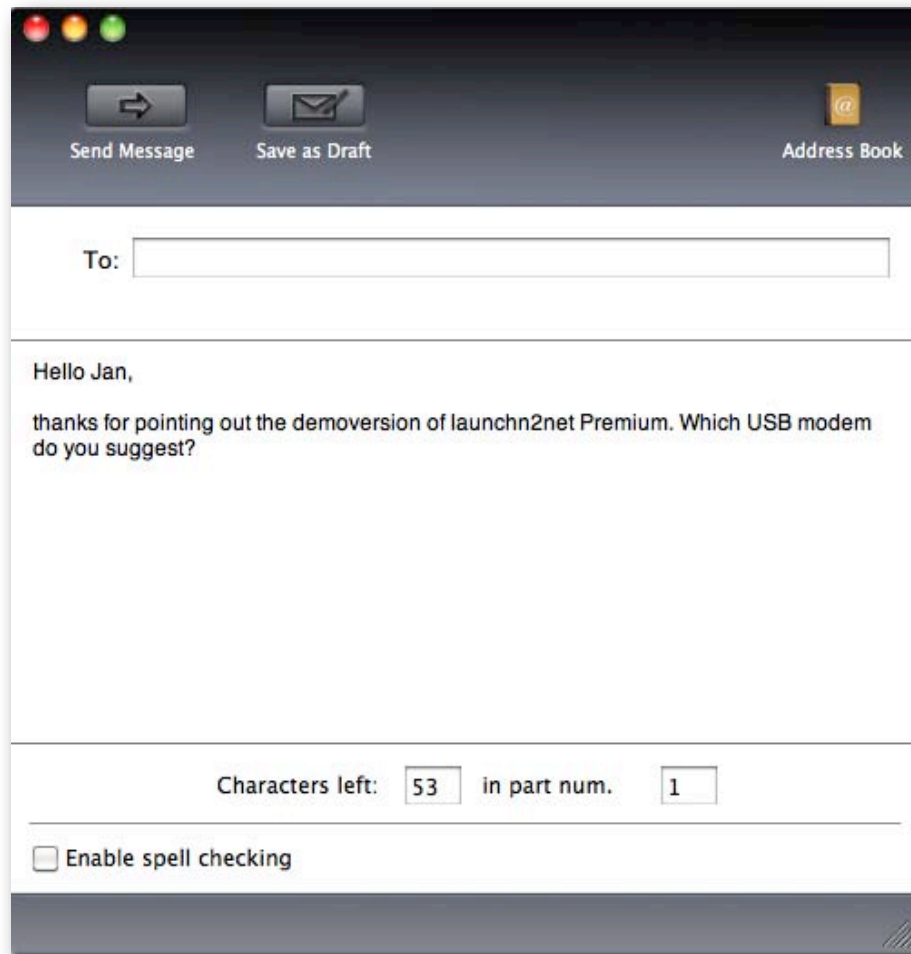
Select a message in the main view and click **Reply** to open the reply message window.

The reply message window already includes the sender in the ,To:' field. You can add up to 9 more recipients.

Enter the desired text of your message and click **Send** to send it immediately or **Save as Draft** to save the message in the ,Drafts' folder for later use.

If no cellular service is available, the message will be saved in the Outbox and be sent when a service is available again.

Forward a text message



Select a message in the main view and click **Forward** to open the forward message window.

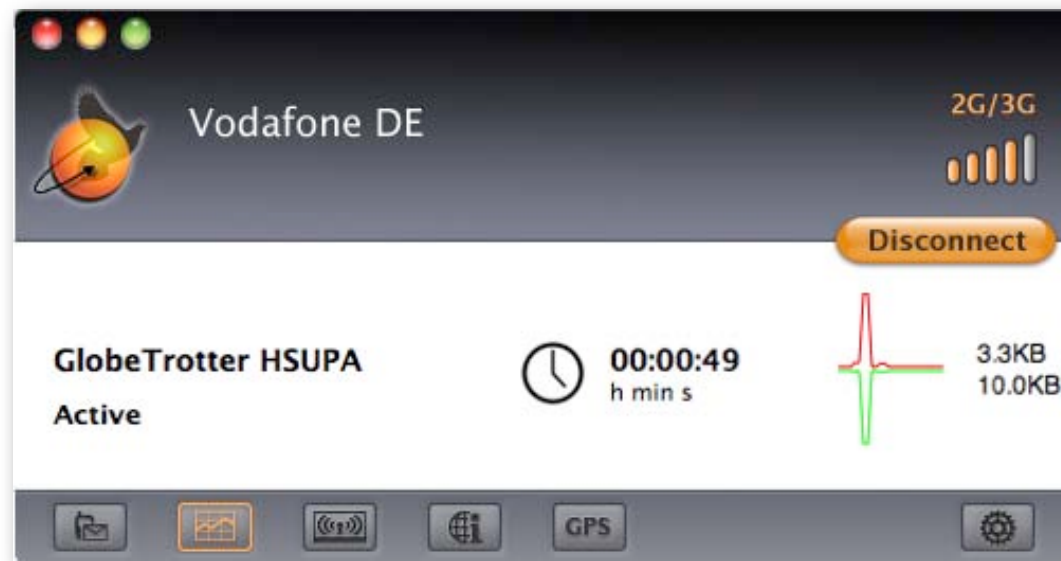
The forward message window already includes the contents of the selected text message. You can arbitrarily alter the text.

Enter up to 10 recipients in the ,To:' field and click **Send** to send it immediately or **Save as Draft** to save the message in the ,Drafts' folder for later use.

If no cellular service is available, the message will be saved in the Outbox and be sent when a service is available again.

Statistics manager

launch2net Premium features a sophisticated statistics manager for a detailed look on data and time usage. Statistical data is available for different users and SIM cards as well as for home and roaming connections. Statistical data can be displayed for any given timeframe.



Click the statistics icon in the footer of launch2net Premium to open the statistics manager.

Statistical data are only approximate figures. Refer to your bill for final amounts and charges.

Using the Statistics manager

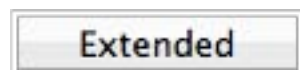


launch2net Premium offers two views on the statistical data, the standard view and the extended view.

Click the appropriate button to use one of these functions:

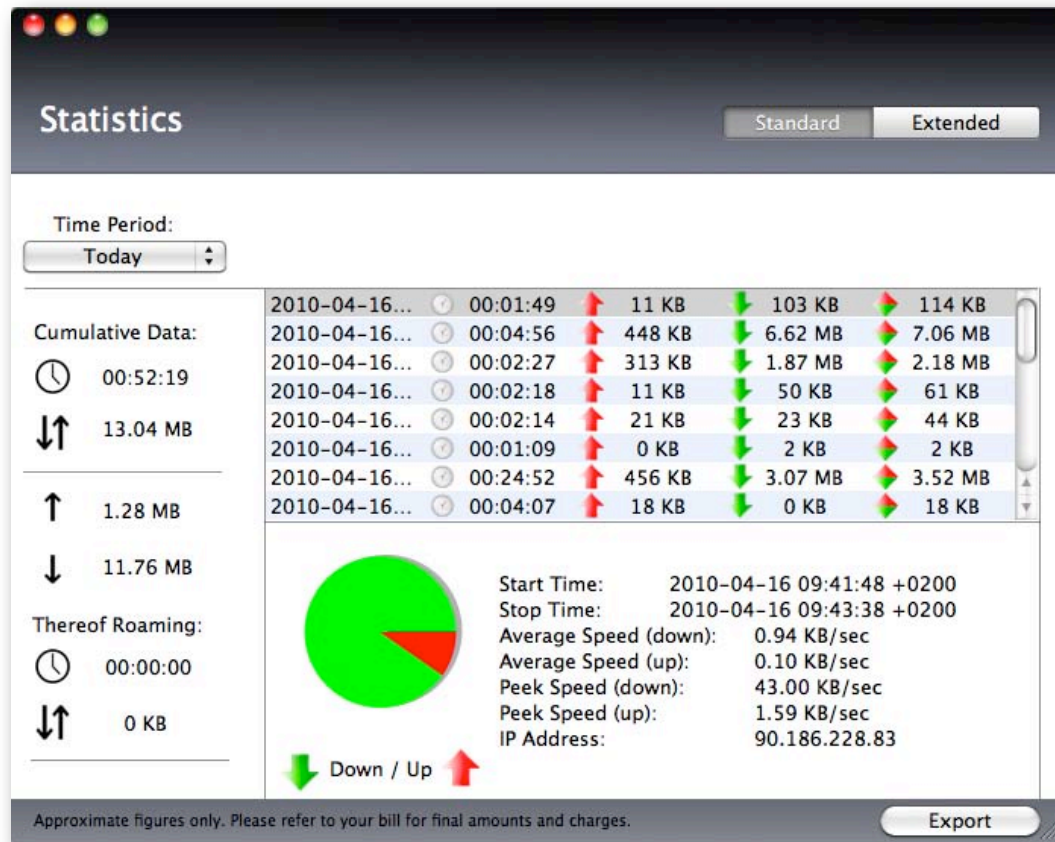


Use the standard view for a quick glance on connection details for the last used SIM card, the current user and predefined time periods



Use the extended view for a detailed information on connection details for all used SIM cards, all users and any given time period

Standard view



The standard view offers a quick glance of statistical data for the last used SIM card and the current user.

The left pane displays the total online time and data throughput for the selected time period. You can switch the time frame in the pop-up menu.

The right pane displays each connection within the selected time frame. Select a connection to see its details in the lower pane.

Click **Export** to save all data in .csv format

Extended view

Statistics [Standard] [Extended]

Time Period: Today | User: novamedia | SIM Card: Vodafone (ES) | Connections: All Connections

From: 2010-04-16 00:00:29 | 83 KB | 522 KB | 605 KB

April 2010
 M D M D F S S
 1 2 3 4
 5 6 7 8 9 10 11
 12 13 14 15 16 17 18
 19 20 21 22 23 24 25
 26 27 28 29 30

Until: April 2010
 M D M D F S S
 1 2 3 4
 5 6 7 8 9 10 11
 12 13 14 15 16 17 18
 19 20 21 22 23 24 25
 26 27 28 29 30

Down / Up

User: novamedia SIM Card: 214013501258631

Start Time: 2010-04-16 16:32:01 +0200
 Stop Time: 2010-04-16 16:32:31 +0200
 Average Speed (down): 17.91 KB/sec
 Average Speed (up): 2.84 KB/sec
 Peek Speed (down): 65.22 KB/sec
 Peek Speed (up): 8.98 KB/sec
 IP Address: 77.208.69.33

Approximate figures only. Please refer to your bill for final amounts and charges. [Export]

The extended view offers a detailed view of statistical data. Select for which time period, user, SIM card, and connection you would like the statistical data to be displayed.

Use the calendar to set the time period and use the pop-up menus to further define the selection of the connections which will be displayed. Select a connection to see its details in the lower pane.

Click **Export** to save all data in .csv format

Mobile Hub

launch2net Premium can act as a wireless router for other computers and devices like iPads and iPhones. Enable Mobile Hub to create a new WiFi network and to control the usage of this network by other devices.



Click the MoHub icon in the footer of launch2net Premium to open the MoHub manager.

Using the Mobile Hub

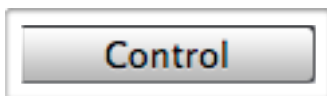


launch2net Premium offers two views on Mobile Hub, the Setup screen and the Control screen.

Click the appropriate button to use one of these functions:



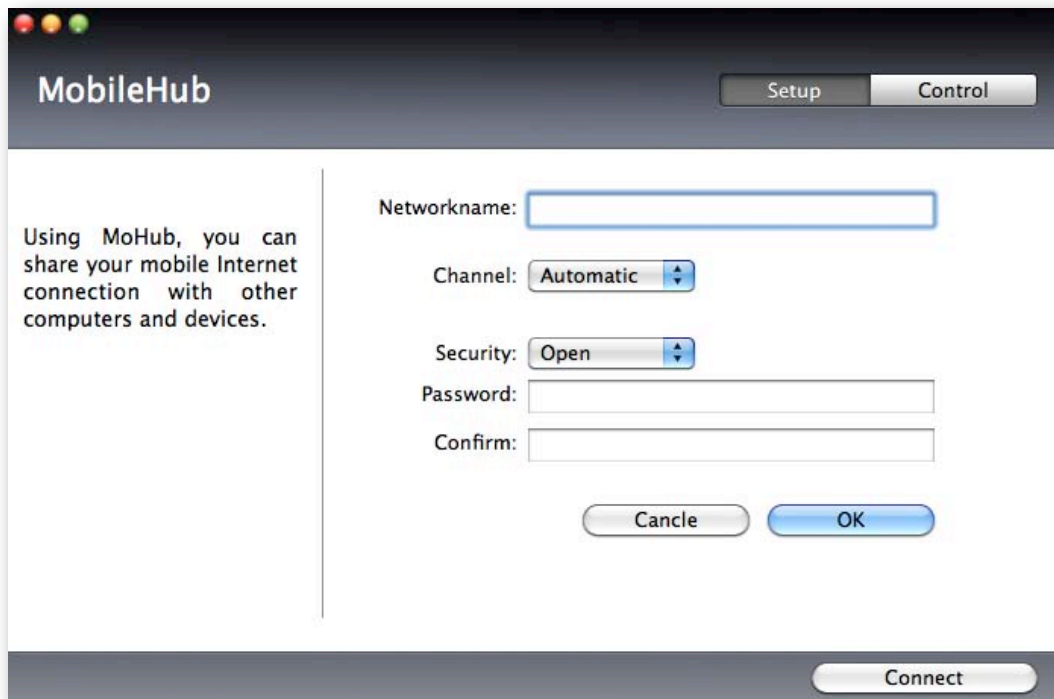
Use the Setup screen to set the name and security options of the network



Use the Control screen to allow or deny access to the network.

Setup screen

To set up a Mobile Hub, fill in the necessary fields and click ,Connect'. The name you choose for the network is the name which is displayed in the list of available networks on the other devices.



Using MoHub, you can share your mobile Internet connection with other computers and devices.

Networkname:

Channel:

Security:

Password:

Confirm:

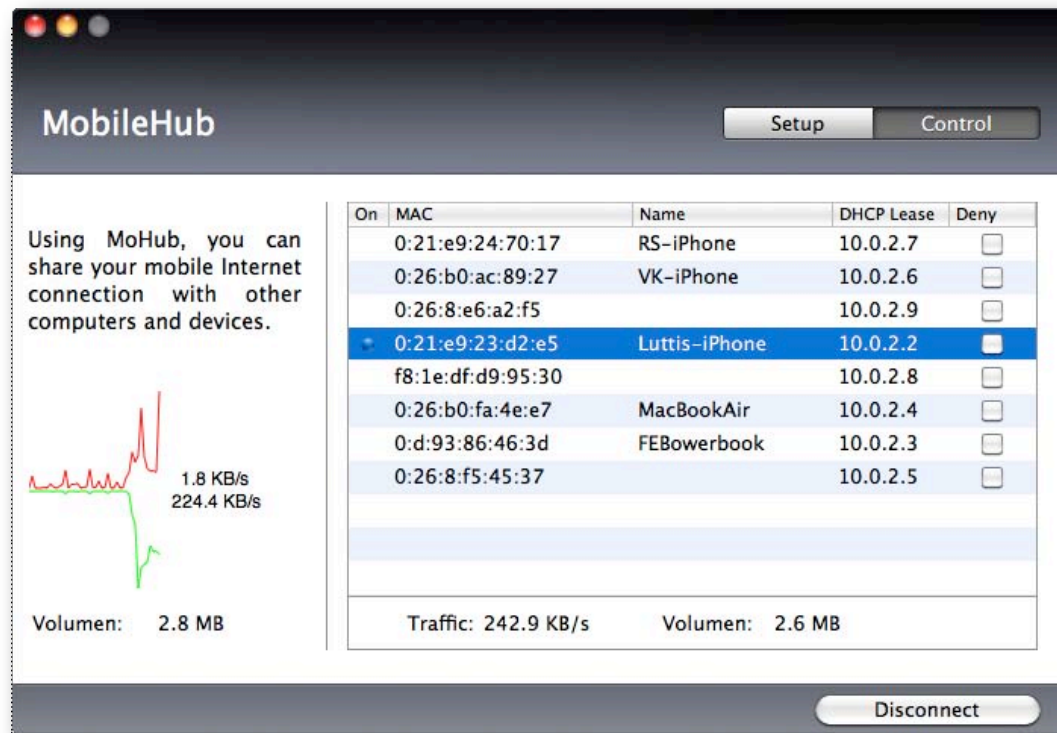
Channel: Select a channel if the automatic selection leads to slow network traffic.

Security: Can be set to ,Open' and ,WEP 128Bit'.

Password: Depends on the security level. For WEP128Bit you will have to use 13 Characters.

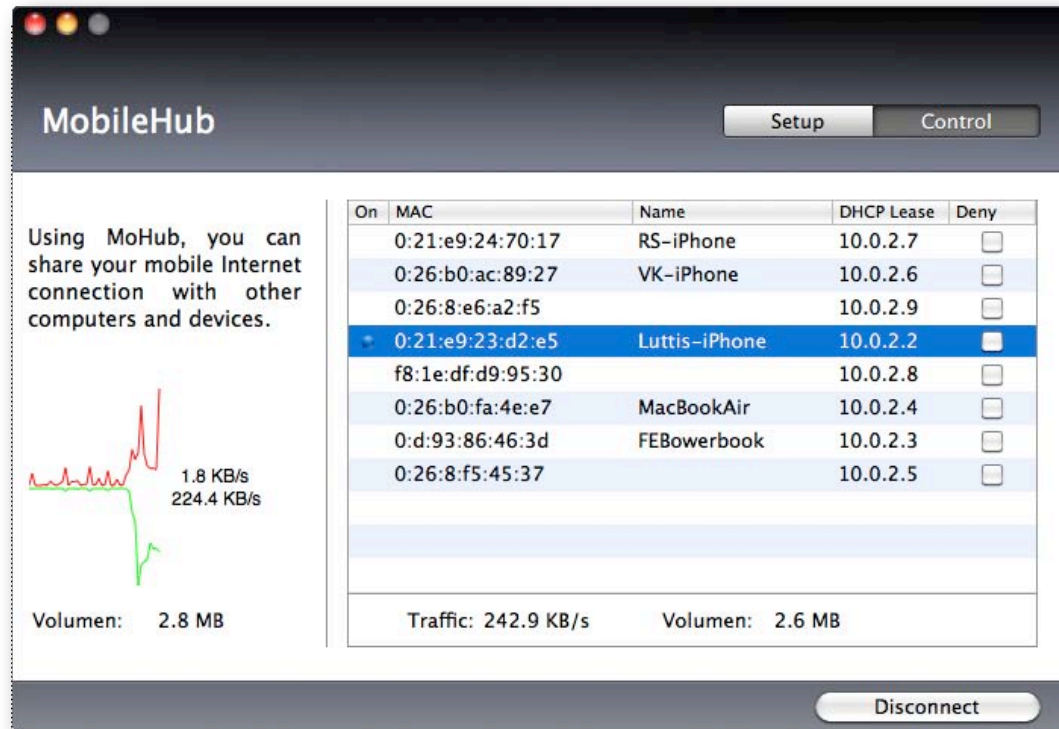
Control screen

Every device which logs into the Mobile Hub network is listed in the ,Control‘ screen. All currently connected devices are indicated by a blue spot in front of the name. Click on any column header to sort the table accordingly.



Deny a connection: To deny a connection for a device, click the ,Deny‘ checkbox for this device. The device will be banned from the network instantly.

Reverse a denial: Uncheck the ,Deny‘ checkbox for the selected device to allow a network connection. The device has to log into the Mobile Hub’s WLAN again.



Data throughput: If Mobile Hub is active, you can see the current data throuput and data volume at the left side of the control screen.

Statistics: Select a device name to see its total data volume and the data volume of the current connection displayed below the list of devices.

PrePaid Information Service

If you want to travel abroad, data connections can become very costly due to high data-roaming fees. To save on these roaming costs, you can use a local PrePaid SIM card. Using launch2net Premium, finding a supported PrePaid service in any country is now just a click away.



Click the PrePaid icon in the footer of launch2net Premium to open the PrePaid manager.

The PrePaid information service is available for full versions of launch2net Premium only.

Step 1: Flip to the PrePaid Screen



Click the PrePaid Information icon in the footer bar to flip the main window and switch to the PrePaid information screen.

Step 2: Select the continent



Select the continent you would like to look for a network provider which offers PrePaid data services.

Click the flip arrow to return to the launch2net Premium main window.

Step 3: Select the country



Select the country you would like to look for a network provider which offers PrePaid data services.

Click the back arrow to return to the continent selection.

Click the flip arrow to return to the launch2net Premium main window.

Step 4: See all supported networks

You will see a list of mobile network providers which offer PrePaid data services.



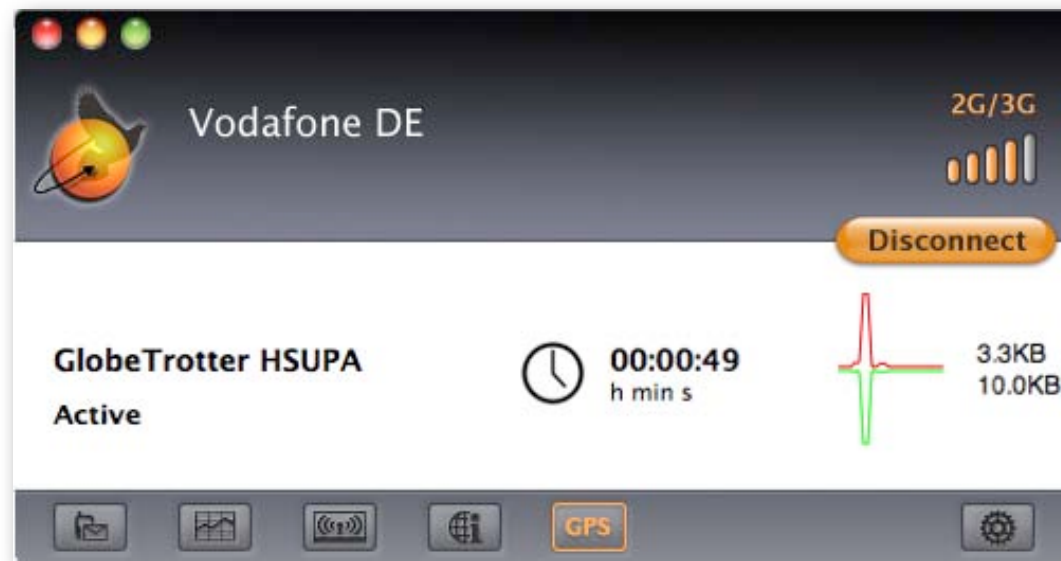
Click on the link to surf to the according website of the selected provider.

Click the back arrow to return to the continent selection.

Click the flip arrow to return to the launch2net Premium main window.

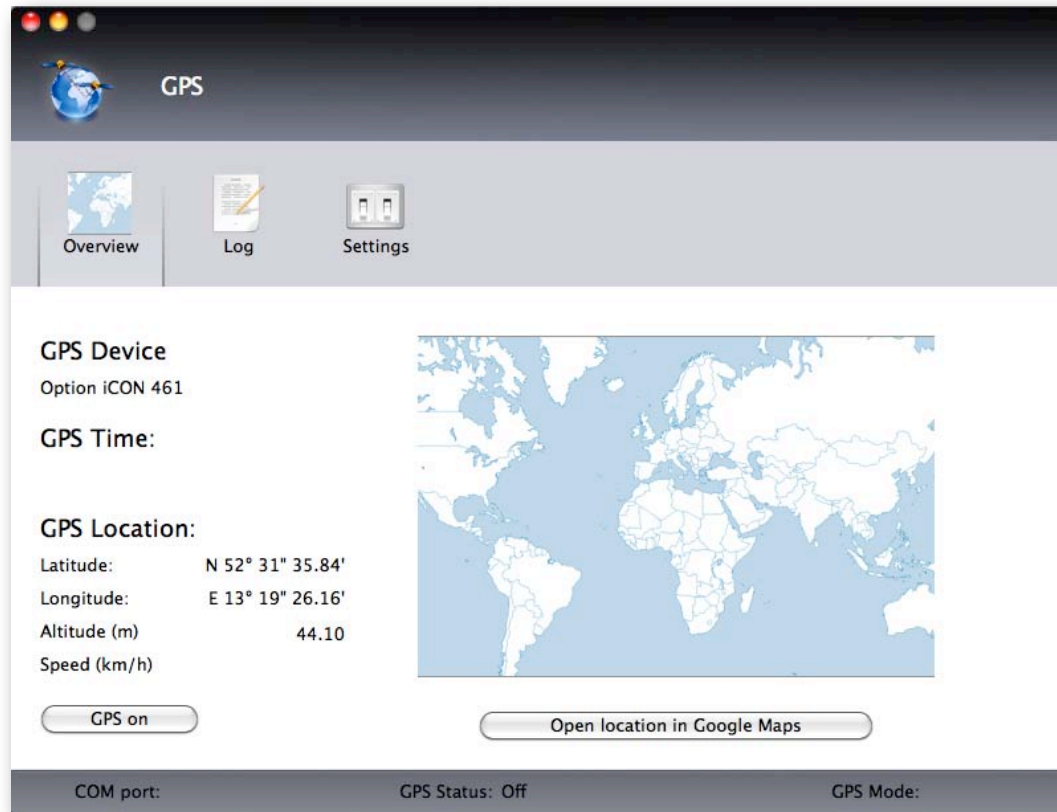
GPS Service

Some 3G modems include a GPS chip to display the current location. launch2net Premium supports the display of GPS information with the GPS manager.



Click the GPS icon in the footer of launch2net Premium to open the GPS manager.

Display of GPS information



Click **Turn GPS on** to start searching for the current location.

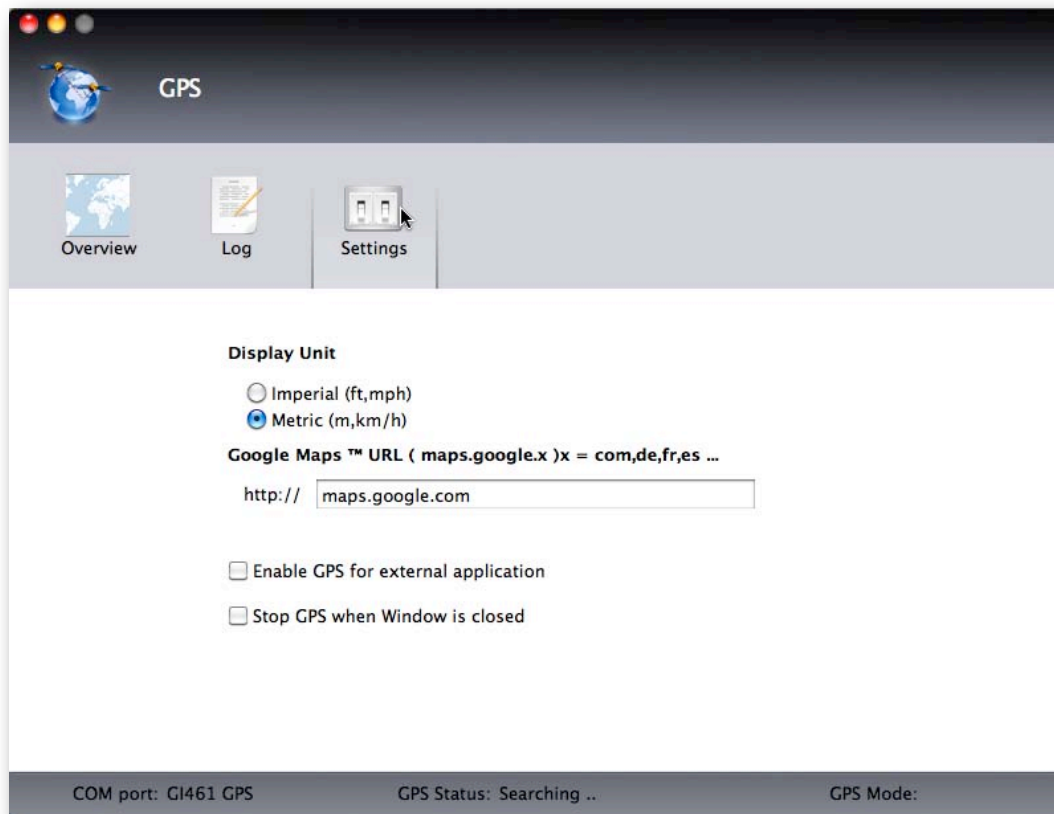
As soon as the modem has a GPS fix, launch2net Premium displays the GPS location data.

Click **Open location in Google Maps** to open a browser and display the current location within Google Maps.

Warning: It may take up to several minutes for a modem to get a GPS connection and fix a location. GPS depends on GPS satellites and reception and may not be available everytime or everywhere.

GPS Settings

Use the settings to switch between metric and imperial display units and to change the Google Maps default website.



If you want to use the GPS data with an external application, check **Enable GPS for external application**.

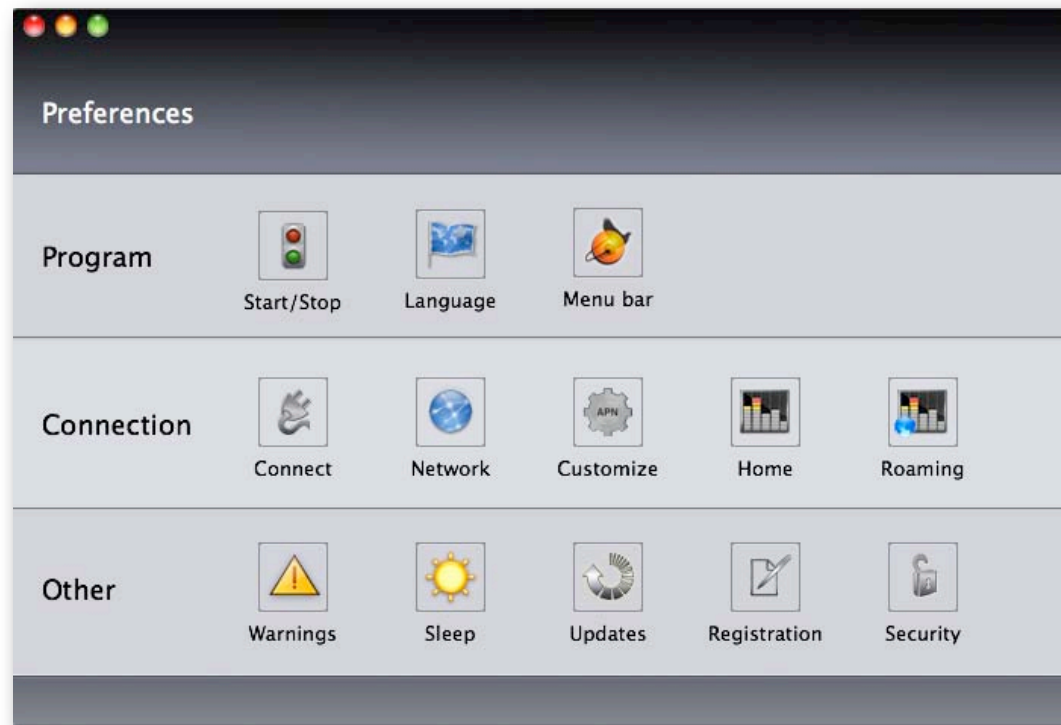
The footer of launch2net Premium displays a COM port. This is the port the external application needs to use when it wants to access the GPS data.

Preferences

Whether you want to activate launch2net Premium, set limits for data or online time volume or need to use custom settings for a mobile connection, you can do so in the preferences of launch2net Premium.






Click the gear wheel icon in the footer of launch2net Premium to open the preferences window.





launch2net Premium distinguishes between program preferences, connection preferences and other preferences.

Program settings

	<p>Start/Stop: Choose when the program will start or quit, e.g. when you plugin or unplug a mobile device or when the Macintosh computer starts up.</p>
	<p>Language: launch2net Premium can either use the system language or you can choose a language the program should use.</p>
	<p>Menu Bar icon: Add a menu bar icon to the menu bar of Mac OS X which offers quick access to connect/disconnect and to create a new SMS text message.</p> <p>When you quit launch2net Premium, the menubar will disappear as well. A later version of launch2net Premium will keep the menubar active, even if launch2net Premium is not running.</p>

Connection settings

	<p>Connect: Choose when the program will connect/disconnect to the Internet, e.g. when you plug in or unplug a mobile device or a time or data limit has been reached.</p>
	<p>Network: Offers network and speed settings.</p> <p>Choose between automatic and manual network selection: The automatic selection lets the SIM card choose which network the mobile device will log onto. If you set this option to ,Manual‘, you can choose the network you would like to use.</p> <p>Note: It will take up to 120 seconds for the list of available networks to appear for the manual selection. If you click ,Search again‘ it may take up to 120 seconds again to refresh the list.</p>

Select the speed: By default, launch2net Premium will select the highest possible speed. But in some circumstances you might want to use a different setting. Choose the setting and click ,Apply‘.

- 3G preferred: A HSDPA/HSPA connection will be used, if available. Otherwise, slower EDGE/GPRS connection will be used.
- 3G only: If a HSDPA/HSPA connection is available, it will be used. Otherwise, no connection will be established at all.
- 2G preferred: A EDGE/GPRS connection will be used, if available. Otherwise, a HSDPA/HSPA connection will be used.
- 2G only: If a EDGE/GPRS connection is available, it will be used. Otherwise, no connection will be established at all.

Tip: You may want to set a connection to ,2G preferred‘ if a 3G connection is unstable and leads to connection interruptions. While a 2G connection will be slower, it increases stability.



Customize: You can choose a connection profile for the network your mobile device is currently logged onto or define your own custom connection profile.



- To choose a predefined connection profile, click on its name and click ,Apply'. The new connection profile is now active.
- To use a custom connection profile, click ,Custom profile' and enter the desired parameters. The custom connection profile is active instantly. To stop using the custom connection profile, deselect the option ,Custom profile'.

Tip: You can get the access information from your network operator. In most cases, you only need the APN, Username and Password to establish a mobile network connection.






Home Limits: Allows you to set session and period limits for online time and data volume usage for all connections in the Home network. This does not apply to roaming connections.

- **Session limits:** These limits apply to every connection. The connection will close when a data volume or online time you set here is reached within one session. If you set both, the connection will be closed after the first condition is reached.
- **Period limits:** These limits apply for the time period you define here. The connection will close after the data volume or online time limit is reached. If you set both, the connection will be closed after the first condition is reached.

	<p>Roaming Limits: Allows you to set session and period limits for online time and data volume usage for roaming connections only.</p> <ul style="list-style-type: none">• Session limits: These limits apply to roaming connections. The roaming connection will close after the data volume or online time you set here is reached within one session. If you set both, the connection will be closed after the first condition is reached.• Period limits: These limits apply to roaming connections within the time period you define here. The connection will close after a the data volume or online time you set here is reached. If you set both, the connection will be closed after the first condition is reached.
	<p>Security: Allows you to change the PIN code for your current SIM card and to define if and when the PIN is requested.</p>

Other settings

	<p>Warnings: Select if you would like to see a warning message on the screen, if you Quit launch2net Premium or if you close a connection.</p>
	<p>Sleep: Select what happens, if the Mac is switching into sleep mode and a mobile Internet connection is active.</p> <p>You can either have launch2net Premium to prevent sleep and keep the Internet connection open or to allow sleep and quit the Internet connection.</p> <p><i>Note: Some mobile devices do not support sleep mode. After you wake the Mac from sleep mode you may have to unplug the device and plug it in again. A forced sleep mode can not be prevented.</i></p>
	<p>Updates: Select how often launch2net Premium shall check for updates.</p>



Activation: Switch to a full version by entering an activation key. See chapter [Activation](#) for details on the activation process.

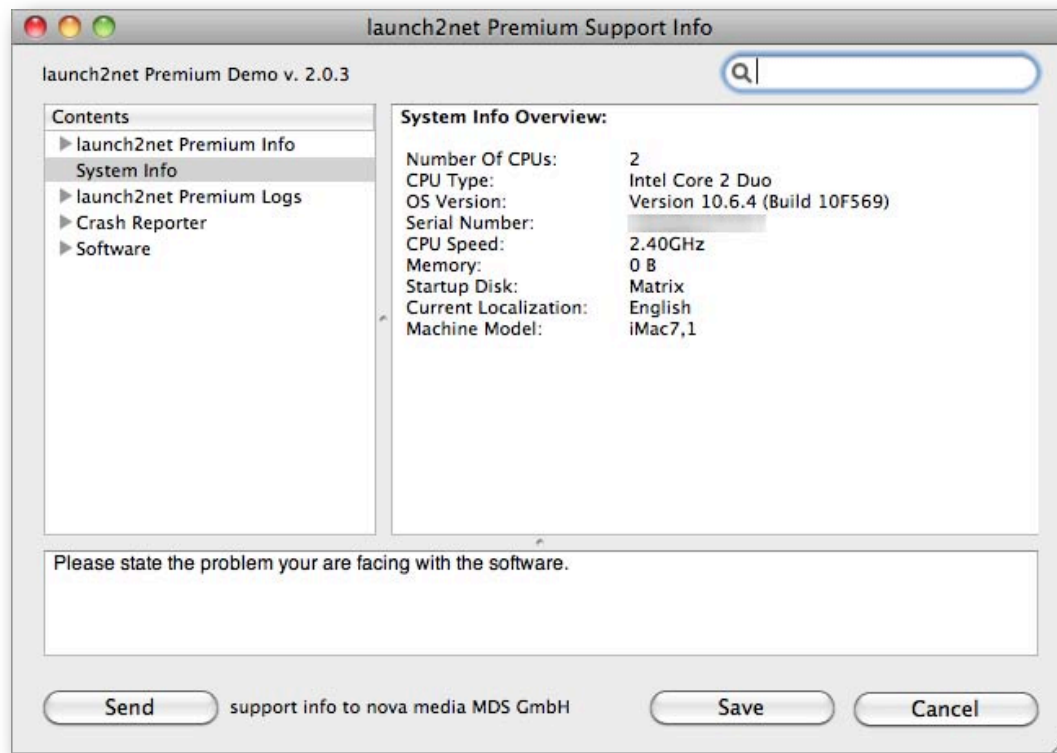
Tip: To save your investment in launch2net Premium you can transfer your activation to a new Macintosh computer.

Install launch2net Premium on the new Macintosh computer and open the activation dialog. Enter your activation key and your e-mail address and click **Activate license**.

You will see a notice that this activation key is already in use. Click **OK** to disable the activation on the old computer. The new Macintosh computer is now activated to use launch2net Premium.

Help

We are happy to help you with any questions you have about launch2net Premium. The easiest way for us to help you is if you are using the built-in help tool of launch2net Premium to contact us.



Click Help > Support Info. You will see a new window. Please enter the problem description in there.

Click ,Send‘ to open your default e-mail client and send the report to us. Click ,Save‘ to save the report on the desktop.

Hint: It may take up to 3 minutes to create the support report. The Macintosh computer will not be very responsive during this time, this is normal.

How to uninstall launch2net Premium



If you want to uninstall launch2net Premium, click Help > Uninstall. This will open the Uninstaller.

Click ,Ok‘ to uninstall launch2net Premium. Per default, the uninstaller will also deactivate your license of launch2net Premium, so you can use the software on another Macintosh Computer.

Other support resources

Please visit our website <http://www.novamedia.de/support> for additional help with using launch2net Premium. On this page, you can also contact us via e-mail.